

10200 Grand Central Ave,  
Owings Mills, MD 21117

BUILDING  
SPECS



**KEVIN KEANE**  
Senior Vice President  
of Office Leasing  
410.581.2519  
kevin@davidsbrown.com

**BRENT MANGUM**  
Vice President  
of Office Leasing  
410.581.2518  
brent@davidsbrown.com

**RYAN BARRETT**  
Leasing Associate  
410.581.2521  
rbarrett@davidsbrown.com



10200 Grand Central Ave,  
Owings Mills, MD 21117

BUILDING  
SPECS

## Overview

- Existing four-story mid-rise Class A mixed-use office/retail building
- 178,000 total RSF
- 142,000 SF of office space
- 36,000 SF of street-level retail space
- Attached, enclosed bridge entry directly into the building from the free, parking garage
- Fitness Center within building
- Exterior signage available. Visible to 140k cars daily
- Direct access to Metro subway station

## Total RSF - 178,000 RSF

LEVEL 1	8,139 SF RETAIL - AVAILABLE
LEVEL 2	1,777 SF OFFICE - AVAILABLE
LEVEL 3	28,478 SF OFFICE - AVAILABLE (Divisible)
LEVEL 4	47,000 SF OFFICE - AVAILABLE (Divisible)

**Column spacing**  
35'

**Celing Height**  
10'-0" AFF

**Delivery**  
Available Now

**Owner/Developer/Property Managers**  
David S Brown Enterprises

**Parking - Office**  
Attached Garage - 2,865 Spaces

**Architect**  
Curry Architects

**General Contractor**  
David S Brown Enterprises

**Transportation**  
Direct access to I-795  
Direct access to Owings Mills Metro Station



**KEVIN KEANE**  
Senior Vice President  
of Office Leasing  
410.581.2519  
kevin@davidsbrown.com

**BRENT MANGUM**  
Vice President  
of Office Leasing  
410.581.2518  
brent@davidsbrown.com

**RYAN BARRETT**  
Leasing Associate  
410.581.2521  
rbarrett@davidsbrown.com

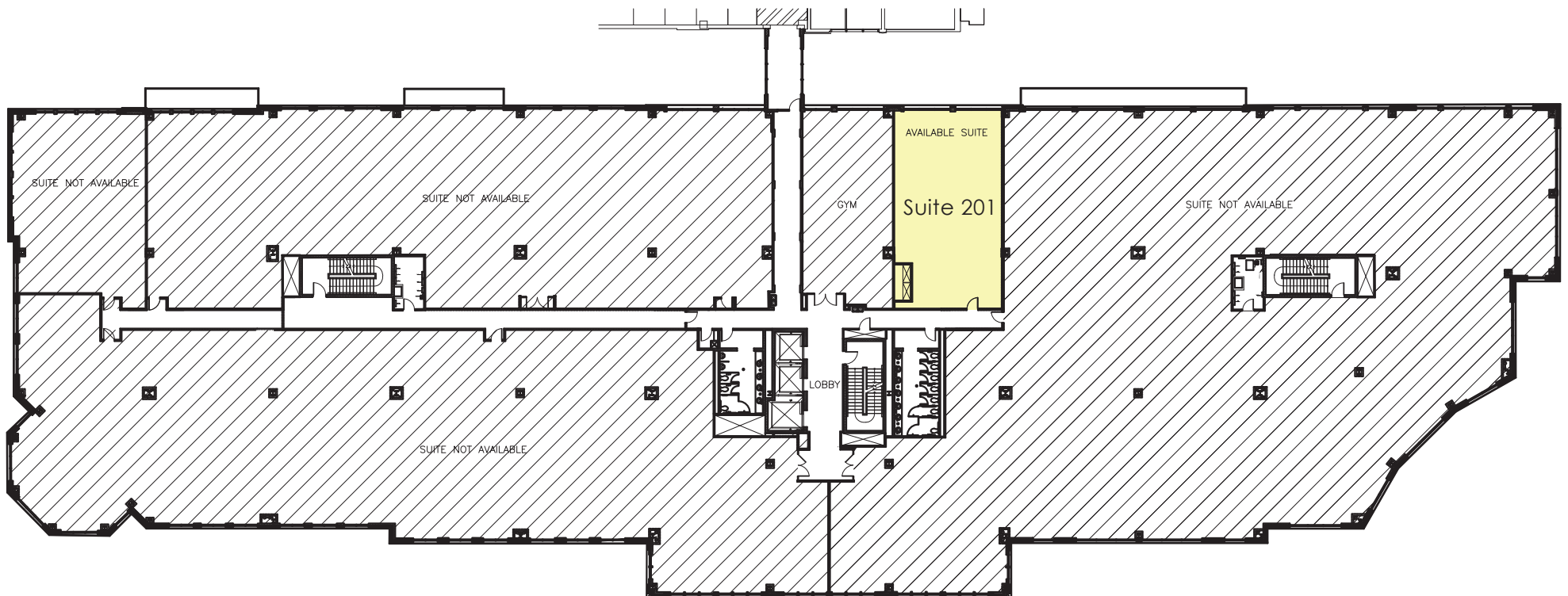


10200 Grand Central Ave,  
Owings Mills, MD 21117

LEVEL  
2

**Available**

Suite 201: 1,777 SF



**KEVIN KEANE**  
Senior Vice President  
of Office Leasing  
410.581.2519  
kevin@daidsbrown.com

**BRENT MANGUM**  
Vice President  
of Office Leasing  
410.581.2518  
brent@daidsbrown.com

**RYAN BARRETT**  
Leasing Associate  
410.581.2521  
rbarrett@daidsbrown.com

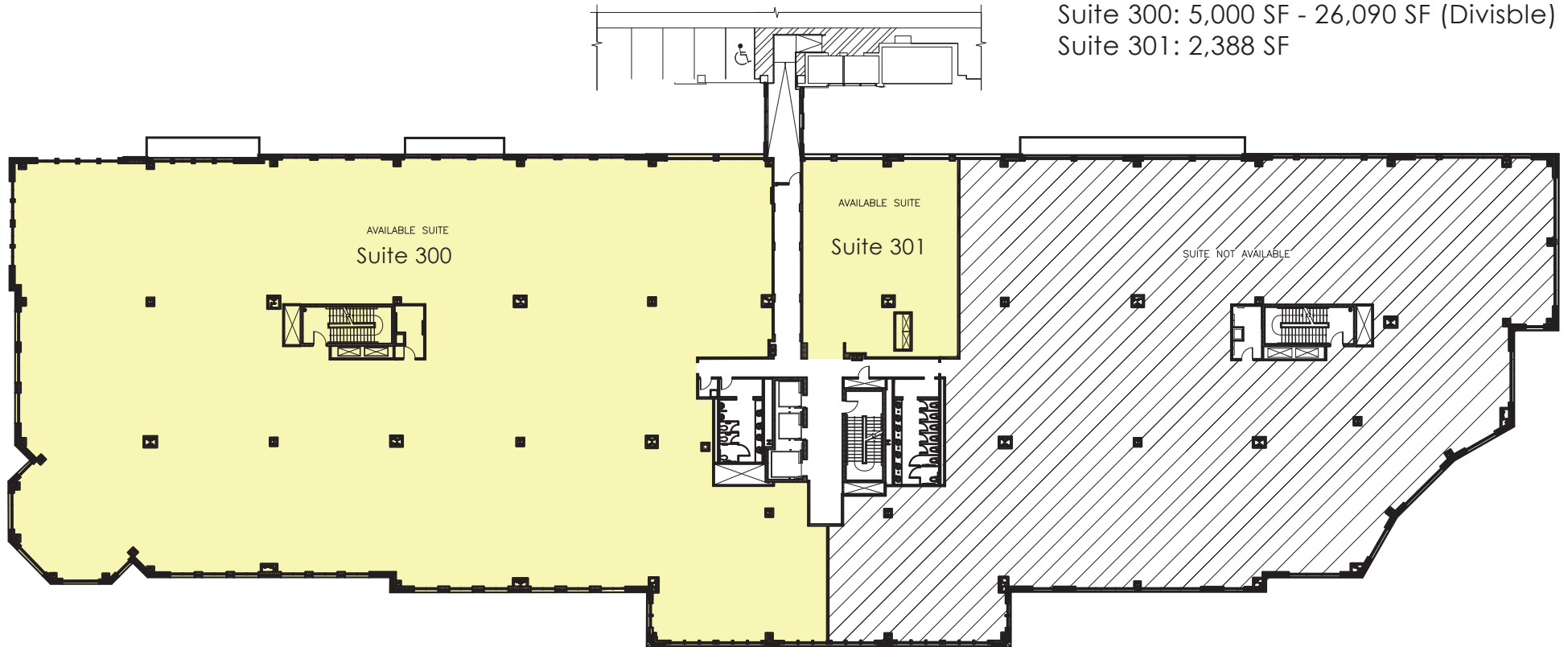


10200 Grand Central Ave,  
Owings Mills, MD 21117

LEVEL  
3

**Available**

Suite 300: 5,000 SF - 26,090 SF (Divisible)  
Suite 301: 2,388 SF



**KEVIN KEANE**  
Senior Vice President  
of Office Leasing  
410.581.2519  
kevin@davidsbrown.com

**BRENT MANGUM**  
Vice President  
of Office Leasing  
410.581.2518  
brent@davidsbrown.com

**RYAN BARRETT**  
Leasing Associate  
410.581.2521  
rbarrett@davidsbrown.com

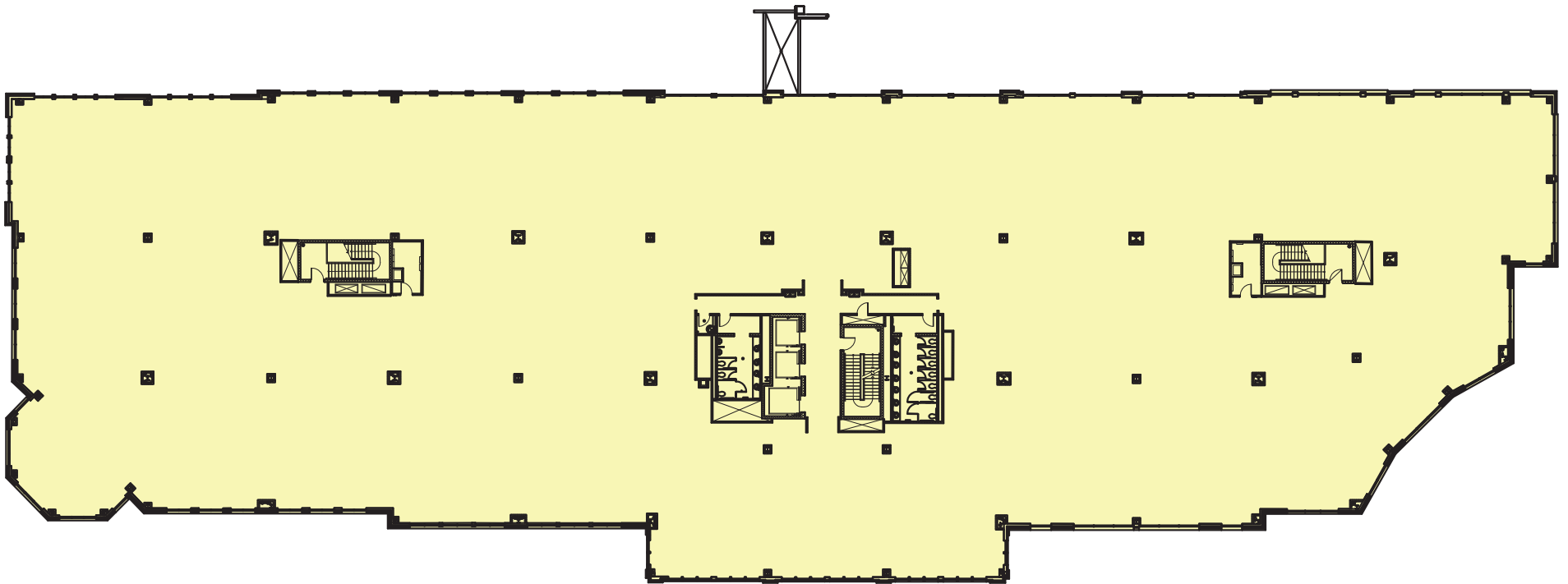


10200 Grand Central Ave,  
Owings Mills, MD 21117

LEVEL  
4

**Available**

Entire Floor: 47,000 SF



**METRO  
CENTRE**

**KEVIN KEANE**

Senior Vice President  
of Office Leasing  
410.581.2519  
kevin@davidsbrown.com

**BRENT MANGUM**

Vice President  
of Office Leasing  
410.581.2518  
brent@davidsbrown.com

**RYAN BARRETT**

Leasing Associate  
410.581.2521  
rbarrett@davidsbrown.com

